

House Type 3

Quality Housing for Sustainable Communities Standards

2 Bedroom / 4 Person House (2 Storey) Areas:

	Target Gross Floor Areas (m ²)	Min-Main Living Room (m ²)	Aggregate Living Area (m ²)	Aggregate Bedroom Area (m ²)	Storage (m ²)
Required	80 sqm	13 sqm	30sqm	25 sqm	4 sqm
Provided	85sqm	13.1 sqm	30.3sqm	24.8 sqm	6.4 sqm

3 Bedroom / 5 Person (2 Storey) Widths:

	Single Bedroom (m)	Double Bedroom (m)	Living Rm [1 Bed] (m)	Living Rm [2 Bed] (m)	Living Rm [3 Bed] (m)
Required	2.1m	2.8m	3.3m	3.6m	3.8m
Provided	-	3.1 m	-	3.6 m	-

House Type 24

Quality Housing for Sustainable Communities Standards

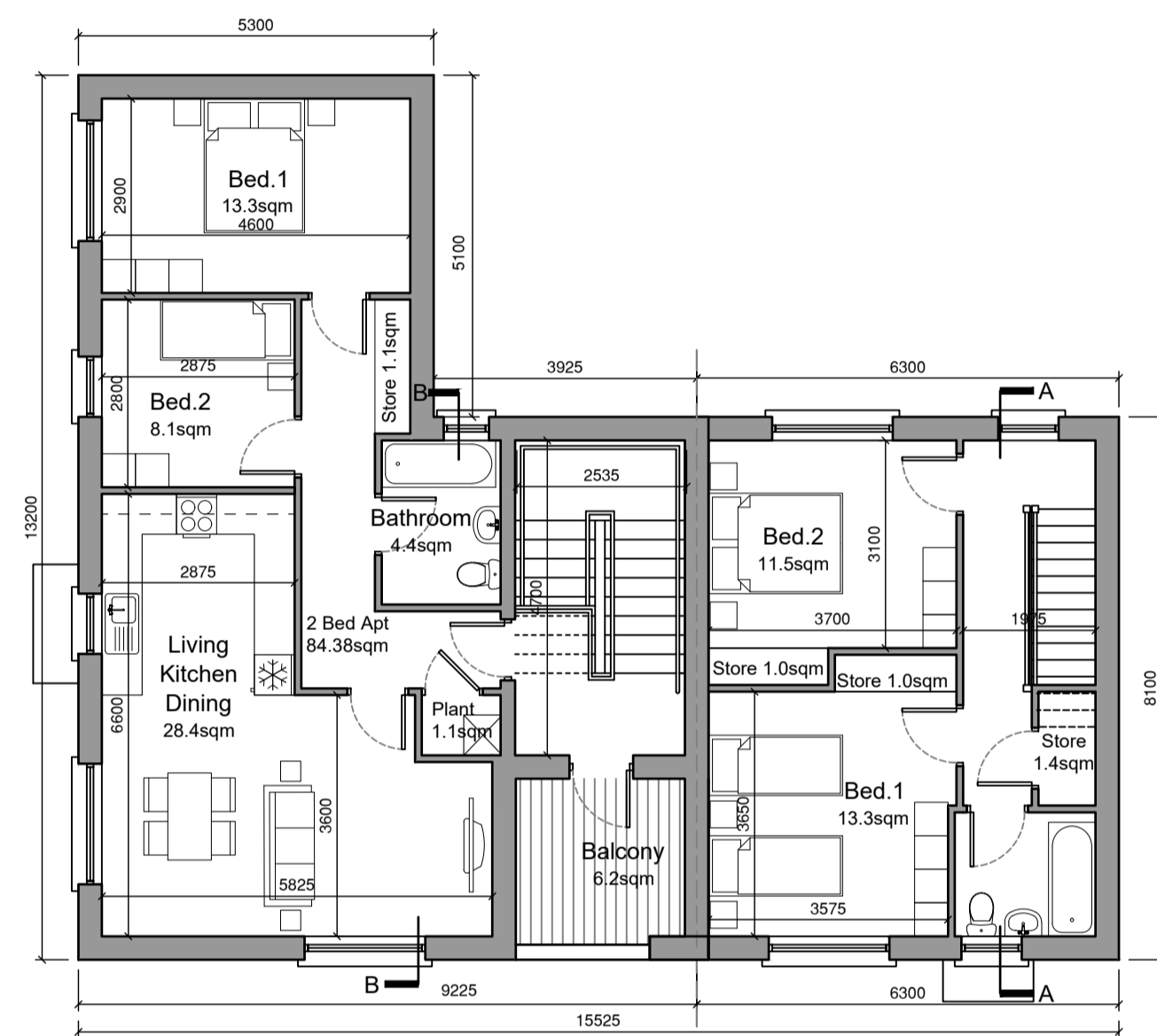
2 Bedroom / 3 Person (apt) Areas:

	Target Gross Floor Areas (m ²)	Aggregate Living Area (m ²)	Aggregate Bedroom Area (m ²)	Storage (m ²)
Required	63 sqm	28sqm	20.1 sqm	5 sqm
Provided	GF 67.15sqm FF 67.15sqm*	GF 28.2sqm FF 28.4sqm	GF 21.9sqm FF 21.4sqm	GF 3.1sqm FF 4.6sqm

2 Bedroom / 3 Person (apt) Widths:

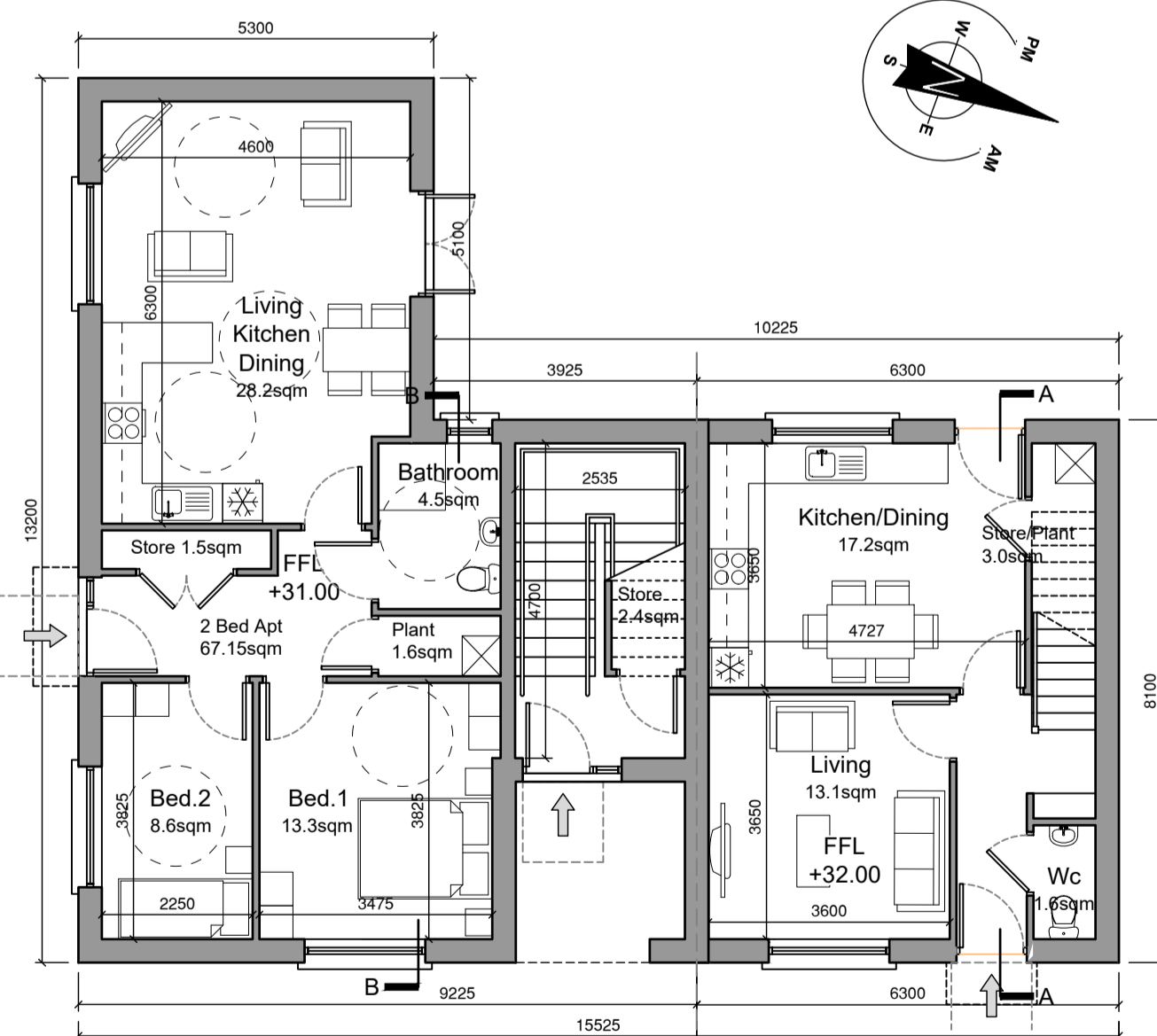
	Single Bedroom (m)	Double Bedroom (m)	Living Rm [1 Bed] (m)	Living Rm [2 Bed] (m)	Living Rm [3 Bed] (m)
Required	2.1m	2.8m	3.3m	3.6m	3.8m
Provided	GF 2.25sqm FF 2.8sqm	GF 3.475sqm FF 2.9sqm	-	GF 4.6sqm FF 3.6sqm	-

*Excluding Stairs



First Floor Plan
HT24 Area 81.4sqm

HT3 Area 42.7sqm

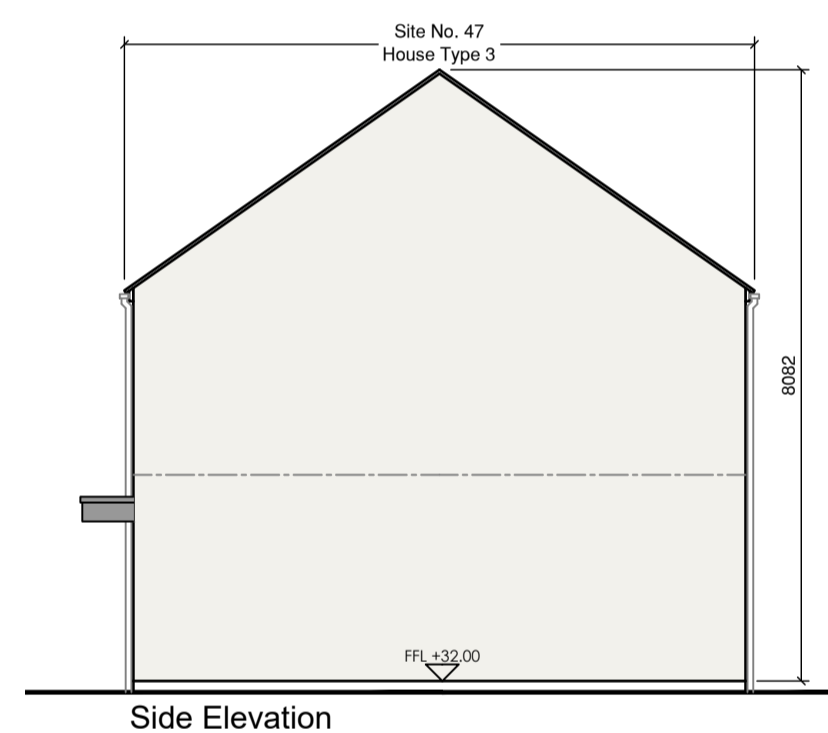


Ground Floor Plan
HT24 Area:80.1sqm Total Floor Area 160.2sqm

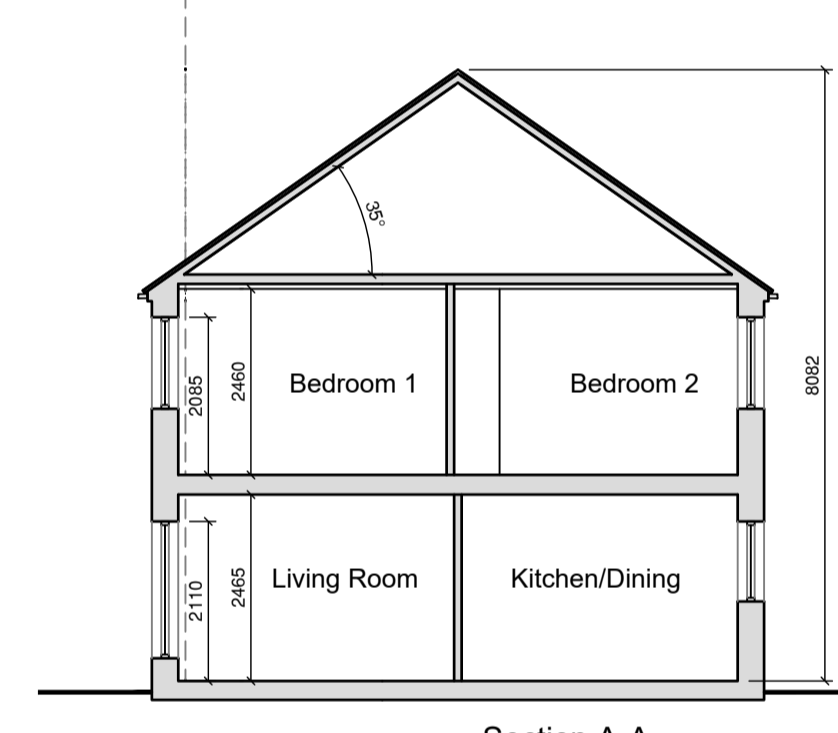
HT3 Area:42.7sqm Total Floor Area 85sqm



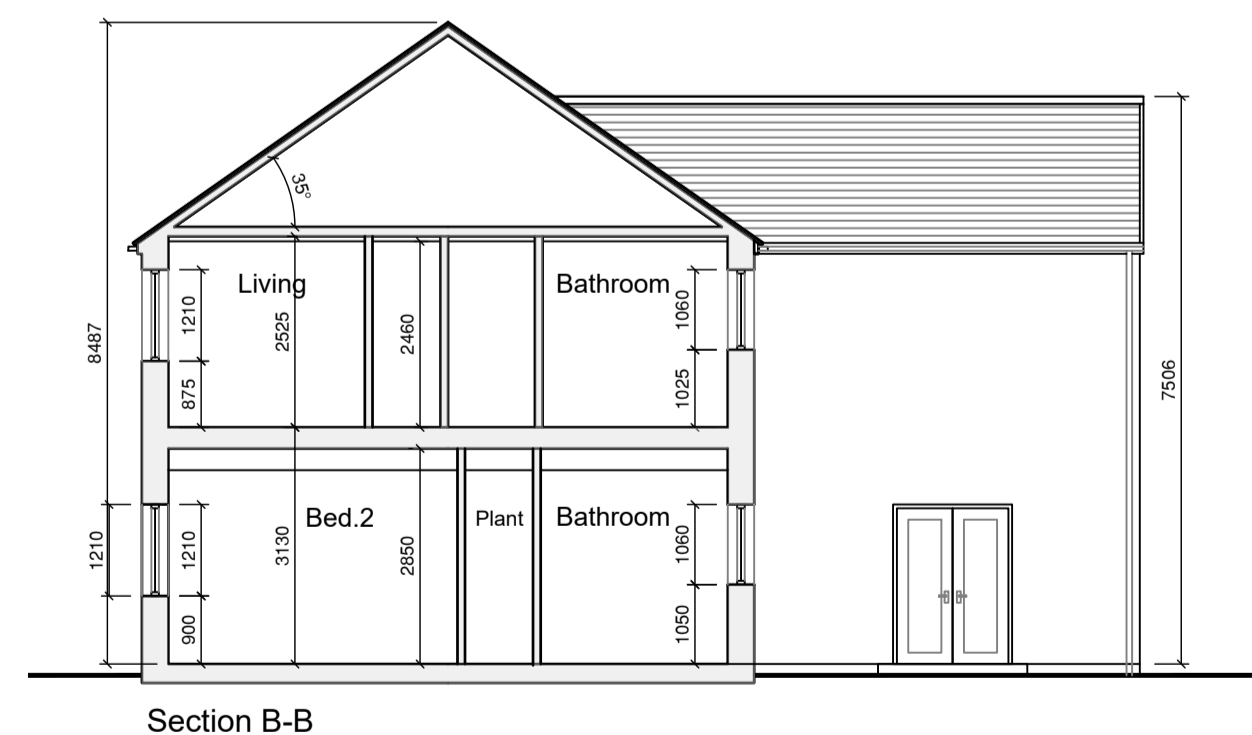
Front Elevation



Side Elevation



Section A-A



Section B-B

External Finishes Schedule

Roof:	Blue/Black Fibre cement Slate
Walls:	White External Render - Smooth/dashed
Windows & Doors:	Grey AluClad
Rain Water Goods:	Black uPVC
Canopy:	Grey Aluminium Fascia.
Railings:	Black Galvanised Railings

Keyplan

